

This non-promotional guide intended for use by UK patients and / or carers of UK patients prescribed NGENLA ▼ (somatrogen) has been developed and funded by Pfizer Ltd.




ngenla® ▼
(somatrogen)
injection

A GUIDE TO USING YOUR NGENLA PEN

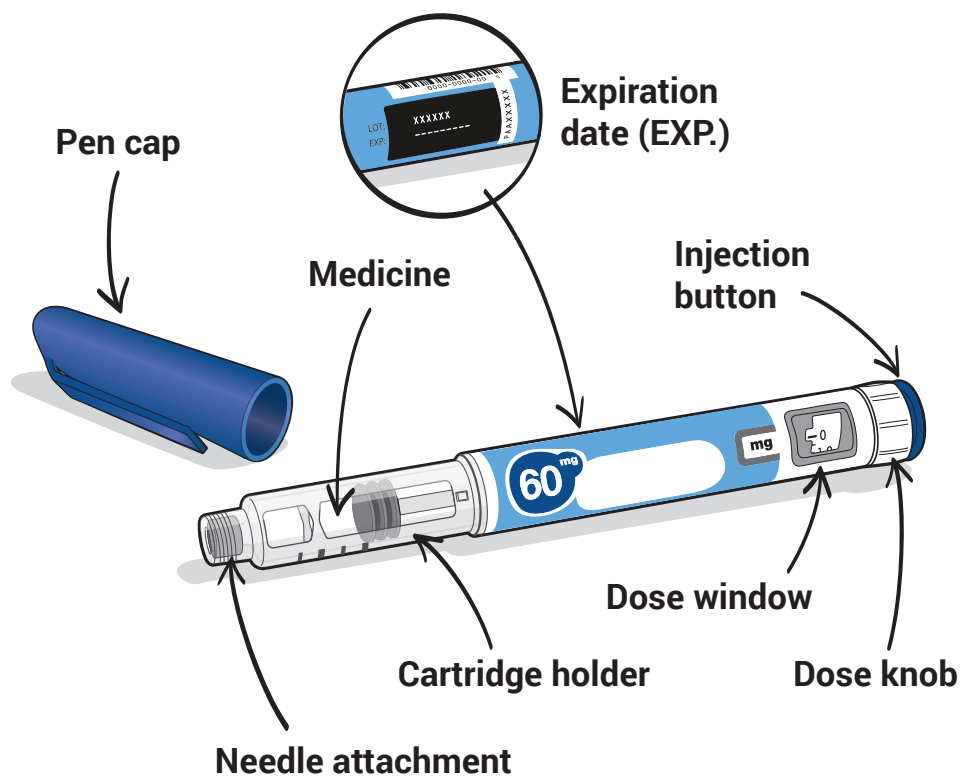


Please read the **full** NGENLA instructions for use that come with your pen before you use your device as this is a summary. If you have any questions about your dose or treatment, or if there is anything you do not understand, please discuss with your doctor, nurse or pharmacist. It is important that you read, understand and follow the instructions before you inject NGENLA.

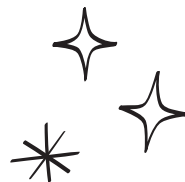
▼ This medicine is subject to additional monitoring. This will allow quick identification of new safety information. You can help by reporting any side effects you may get. See <https://yellowcard.mhra.gov.uk/> or search MHRA Yellow Card in the Google Play or Apple App store for how to report side effects.



YOUR NGENLA PEN



The 60 mg pen has been used for illustrative purposes.



Supplies you will need each time you inject NGENLA

Included in the carton:

- 1 NGENLA prefilled pen (either 24 mg or 60 mg)

Not included in the carton:

- 1 new sterile needle for each injection
- Alcohol swabs
- Cotton balls or gauze pads
- Adhesive bandage (plaster)
- A suitable sharps bin to dispose of used pen needles and pens.

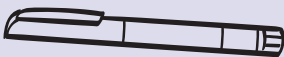
Pen needles are not included with your NGENLA pen. You can use pen needles from 4 mm to 8 mm (between 30G and 32G).

Talk with your doctor, nurse or pharmacist about the right needle for you.

Note: Needles with a safety shield do not have an inner needle cap. Steps 5, 6 and 11 within these instructions relating to the inner needle cap may not apply when using a needle with a safety shield. Refer to the needle manufacturer's instructions for use for more information.

TOP TIPS

- **Do not** shake your pen
- For a more comfortable injection, leave your pen at room temperature for up to 30 minutes.



Do not use your pen if:

- It has been frozen or exposed to heat above 32°C
- It has been dropped
- It looks broken or damaged
- It has been more than 28 days after first use of pen
- It has been removed from the refrigerator for more than 4 hours with each use
- It has been used a total of 5 times.

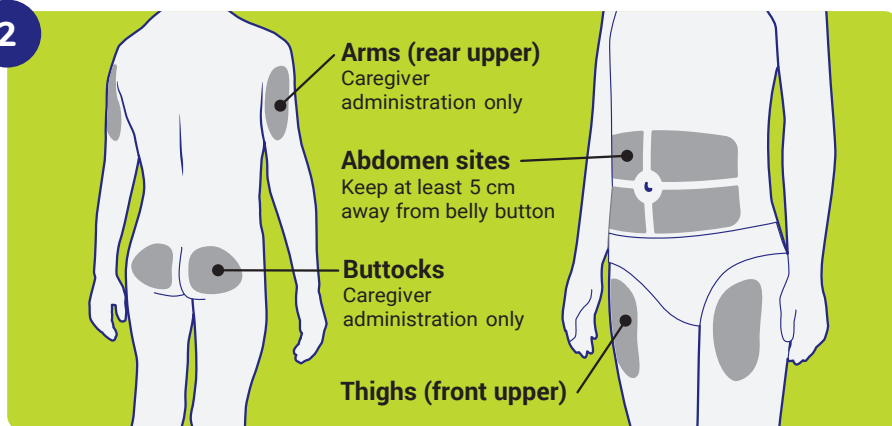


Preparing your NGENLA pen

1 Getting ready

- Wash and dry your hands
- You can use your pen straight from the refrigerator. For a more comfortable injection, leave your pen at room temperature for up to 30 minutes.
- Check the name, strength, and label of your pen to make sure it is the medicine your doctor has prescribed for you.
- Check the expiry date on the pen label. **Do not** use if the expiry date has passed. The pen can be used for 28 days after first use, throw away after 28 days in a sharps container.
- **Do not** remove the pen cap from your pen - until you are ready to inject.

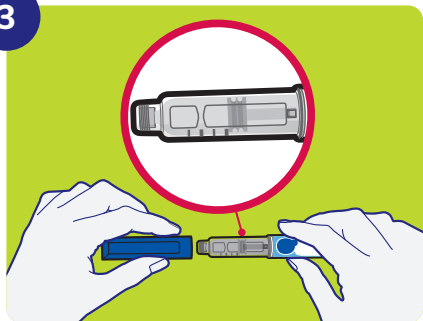
2



Choose and clean your injection site

- NGENLA can be given in the abdomen (belly), thighs, buttocks, or upper arms.
- Choose the best place to inject, as recommended by your doctor, nurse or pharmacist.
- If multiple injections are needed to complete your full dose, give each injection in a different injection site. Use a new needle for each injection.
- **Do not** inject into bony areas, areas that are bruised, red, sore or hard, and areas that have scars or skin conditions.
- Clean the area with an alcohol swab and allow it to dry - **do not** touch injection site after cleaning.

3

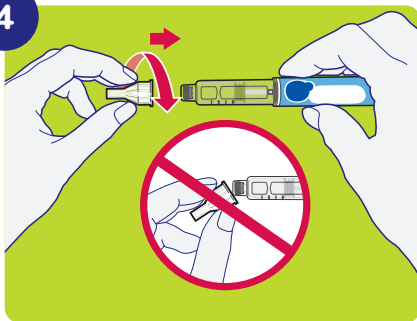


Check your medicine

- Pull off the pen cap and keep it for after your injection.
- Check the medicine inside the cartridge holder.
- Make sure the medicine is:
 - Clear and colourless to slightly light y yellow
 - Free of flakes or particles.
- **Do not** inject the medicine if it:
 - Is cloudy or dark y yellow
 - Has flakes or particles.

Note: It is normal to see one or more bubbles in the medicine.

4

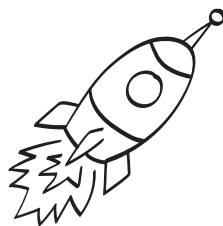


Attach the needle

- Take a new needle and pull off the protective paper.
- Line the needle up with y our pen keeping them both straight.
- Gently push and then scr ew the needle onto your pen.
- **Do not** over tighten.

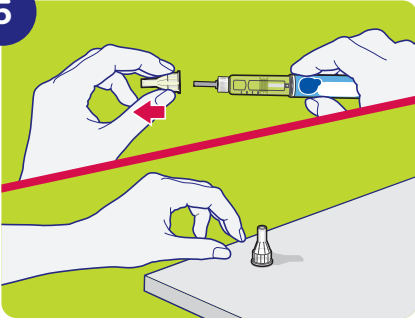
Note: Be careful not to attach the needle at an angle. This may cause the pen to leak.

Caution: Needles have sharp tips at both ends. Be careful so you don't prick yourself or anyone else.





5



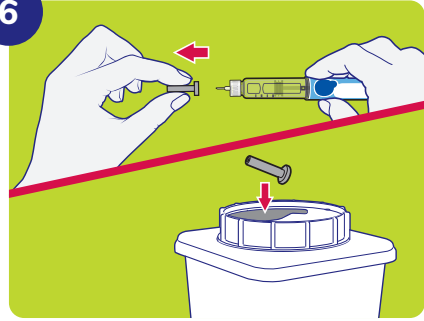
Pull off outer needle cover

- Pull off the outer needle cover but don't throw it away, you will need it later

Note: You should see an inner needle cap after you have removed the outer cover. If you do not see this, try to attach the needle again.

Note: If using a needle with safety shield, refer to the manufacturer's instructions for use.

6



Pull off inner needle cap

- Pull off the inner needle cap carefully to show the needle.
- Throw away the inner needle cap in a sharps container.

Note: If using a needle with safety shield, refer to the manufacturer's instructions for use.

NEXT

If this is a **NEW** pen go to
Setting up a new pen (Priming)

If it is **NOT** a new pen go to:

7

Step 7: Setting your
prescribed dose.



Setting up a new pen (Priming)

IMPORTANT

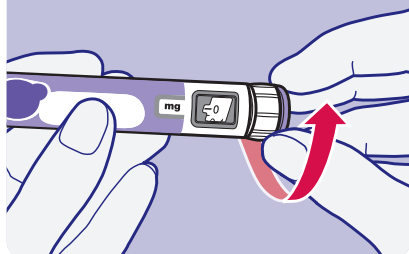
★ For the first use
of a new pen only ★

If you are using this pen for the first time, you'll need to prime it by following these instructions. The purpose of setting up a new pen is to remove air bubbles and make sure you get the correct dose.

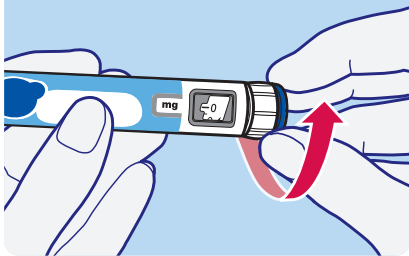
A

Step A: Set dose knob

To prime a 24mg pen,
first turn the dose knob to **0.4**



To prime a 60mg pen,
turn the dose knob to **1.0**



Note: If you turn the dose knob too far, you can turn it back.

B

Step B: Tap cartridge holder

Hold the pen with the needle pointing up so that the air bubbles can rise. Tap the cartridge holder gently to float any air bubbles to the top.

Important: Follow this step even if you do not see air bubbles.

C

Step C: Press button and check for liquid

Press the injection button until it cannot go any further and '0' is shown in the dose window. Check for liquid at the needle top. If liquid appears, your pen is set up.

Always make sure that a drop of liquid appears before you inject. If liquid has not appeared, repeat Step A through to Step C.

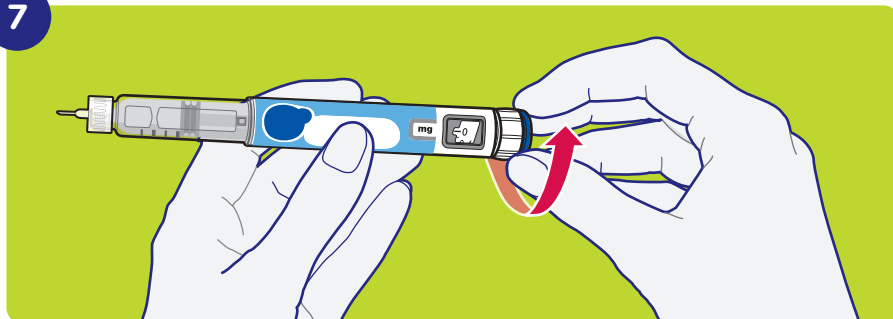
If liquid does not appear after you have repeated Step A to Step C five times, attach a new needle and try one more time.

Do not use the pen if a drop of liquid still does not appear. Contact your doctor, nurse or pharmacist, and use a new pen.

Once your pen is set up, move onto
Step 7: Setting your prescribed dose.

Setting your prescribed dose

7



Setting your prescribed dose

Turn the dose knob to set your prescribed dose

- The dose can be increased or decreased by turning the dose knob in either direction
- **Dose knobs on 24mg pen** turn 0.2mg at a time, and you can only set a dose of up to 12mg for a single injection
- **Dose knobs on 60mg pen** turn 0.5mg at a time, and you can only set a dose of up to 30mg for a single injection
- The dose window shows the dose in mg
- **Always check the dose window to make sure you have set the correct dose.**

Important: Do not press the injection button while setting the dose.

What should I do if I cannot set the dose I need?

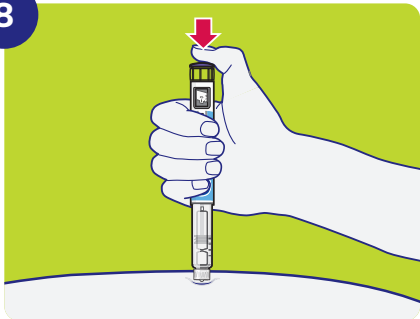
- If your dose is more than the maximum dose of the pen you will need more than 1 injection.
 - If you need help dividing up your dose the right way, ask your doctor, nurse or pharmacist.
 - Use a new needle for each injection
 - If you normally need to give 2 injections for your full dose, be sure to give your second dose.

If there is not enough medicine in your pen for your full dose, you may either:

- Inject the amount left in your pen and prepare a new pen for the rest of the dose
- Get a new pen and inject the full dose.

Administering your injection

8



Insert the needle and inject your dose

- Hold your pen so you can see the numbers in the dose window
- Insert the needle straight into your skin
- Keep holding the needle in the same position in your skin
- Press the injection button until it cannot go any further and "0" is shown in the dose window

9

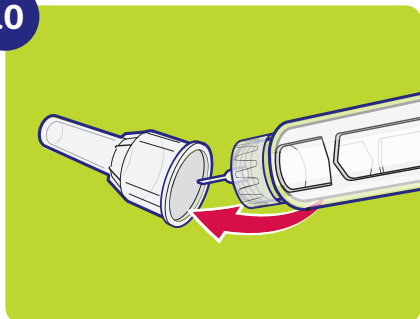


Count to ten

- **Continue to press the injection button while counting to 10,** so the full dose is given.
- After counting to 10, let go of the injection button and slowly remove the pen from the injection site by pulling the needle **straight out**.

Note: You may see a drop of medicine at the needle tip. This is normal and does not affect the dose you just received.

10



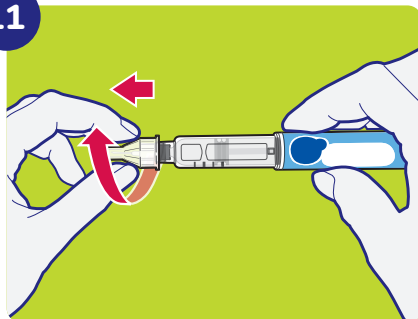
Attach outer needle cover

- Carefully place the outer needle cover back on the needle and press until it is secure.

Caution: Never try to put the inner needle cap back on the needle. You may prick yourself with the needle.

Note: If using a needle with safety shield, refer to the manufacturer's instructions for use.

11

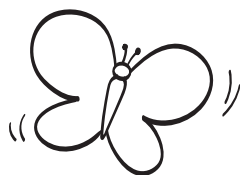


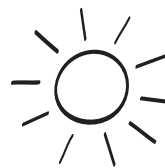
Remove the needle

- Unscrew the capped needle from the pen and gently pull until the capped needle comes off.

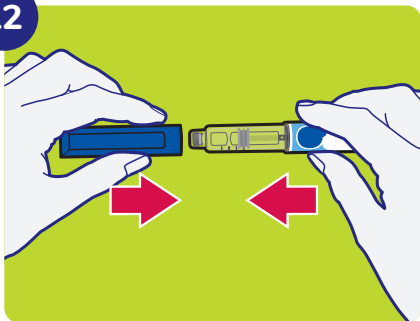
Note: If the needle is still on, replace the outer needle cover and try again.

Important: Dispose of your used pen needles in a sharps container and do not reuse needles.





12



Replace the pen cap

Replace the pen cap back onto your pen.

- **Do not** recap the pen with a needle attached.
- If there is any medicine left in your pen, store in the refrigerator between uses.

13

After your injection

- Press lightly on the injection site with a clean cotton ball or gauze pad, and hold for a few seconds.
- **Do not** rub the injection site. You may have slight bleeding. This is normal.
- You may cover the injection site with an adhesive bandage (plaster), if needed.
- If your pen is empty or it has been **more than 28 days** after first use, throw it away even if it contains unused medicine. Throw away your pen in the sharps container.
- To help you remember when to dispose of your pen you can write the date of first use on the pen label.



Reporting of side effects

If you get any side effects, talk to your doctor, pharmacist or nurse. This includes any possible side effects not listed in the package leaflet.

You can also report side effects directly via the Yellow Card Scheme at: <https://yellowcard.mhra.gov.uk/> or search for MHRA Yellow Card in the Google Play or Apple App Store. By reporting side effects you can help provide more information on the safety of this medicine.

